

# NETAJI SUBHAS INSTITUTE OF TECHNOLOGY


Approved by AICTE and affiliated to Bihar Engineering University

(An ISO Certified Institution)

## INDEX

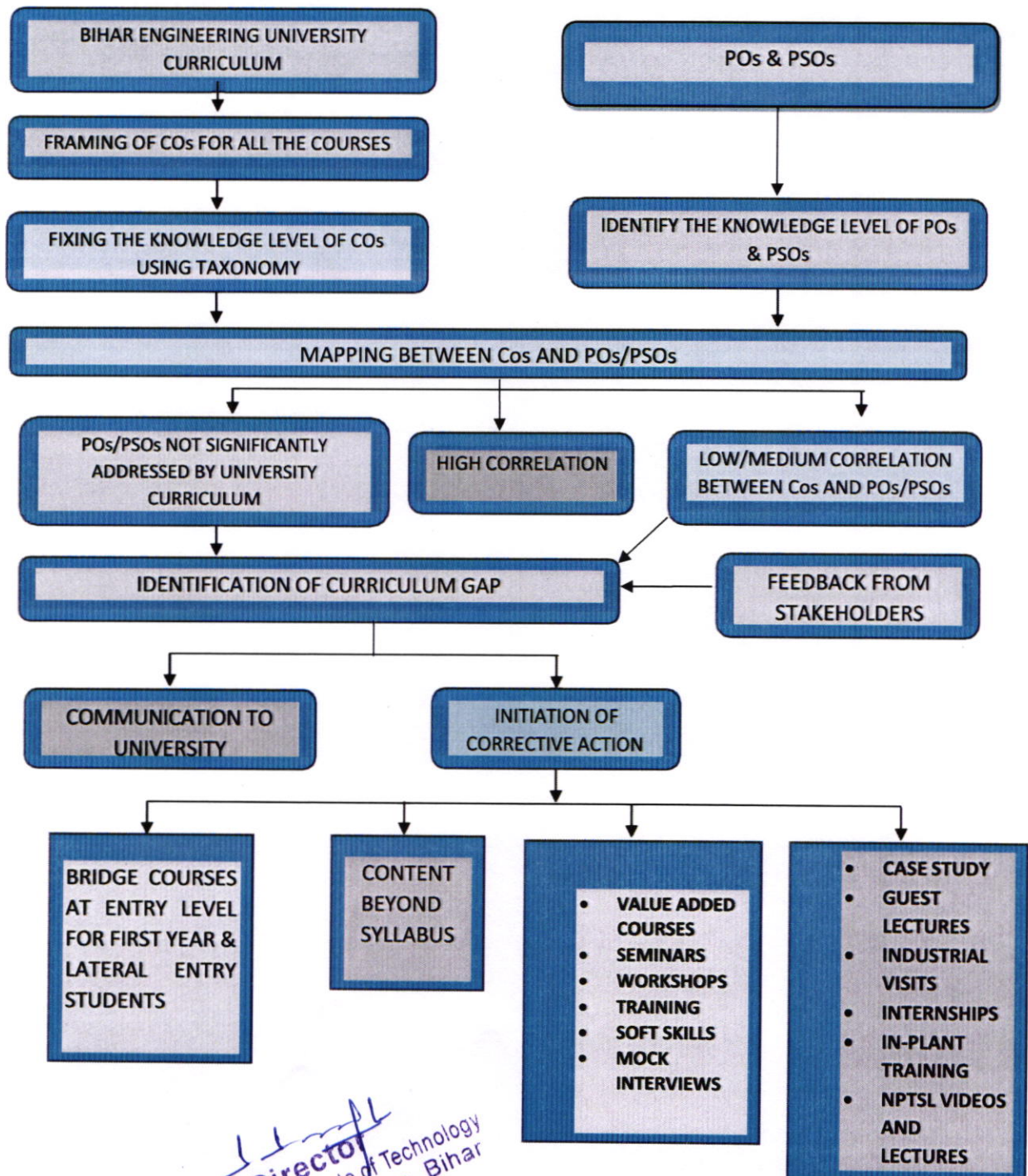
1.1.1 The Process of Curriculum Planning, delivery and assessment:

S.No.	File Description	Page Number
1.	The Process of Curriculum Planning	2
2.	Adherence to Academic Calendar	3
3.	Instructional Methods and Pedagogical Initiatives	5
4.	Conduction of laboratory Experiments	8
5.	Delivery for Course and Evaluation	8
6.	Assisting Weak Students	8
7.	Reinforcements for Bright Students	10
8.	Feedback system on teaching learning process and actions performed	10

  
**Director**  
Netaji Subhas Institute of Technology  
Amhara, Bihta, Patna, Bihar  
PIN-801106

### The Process of Curriculum Planning:

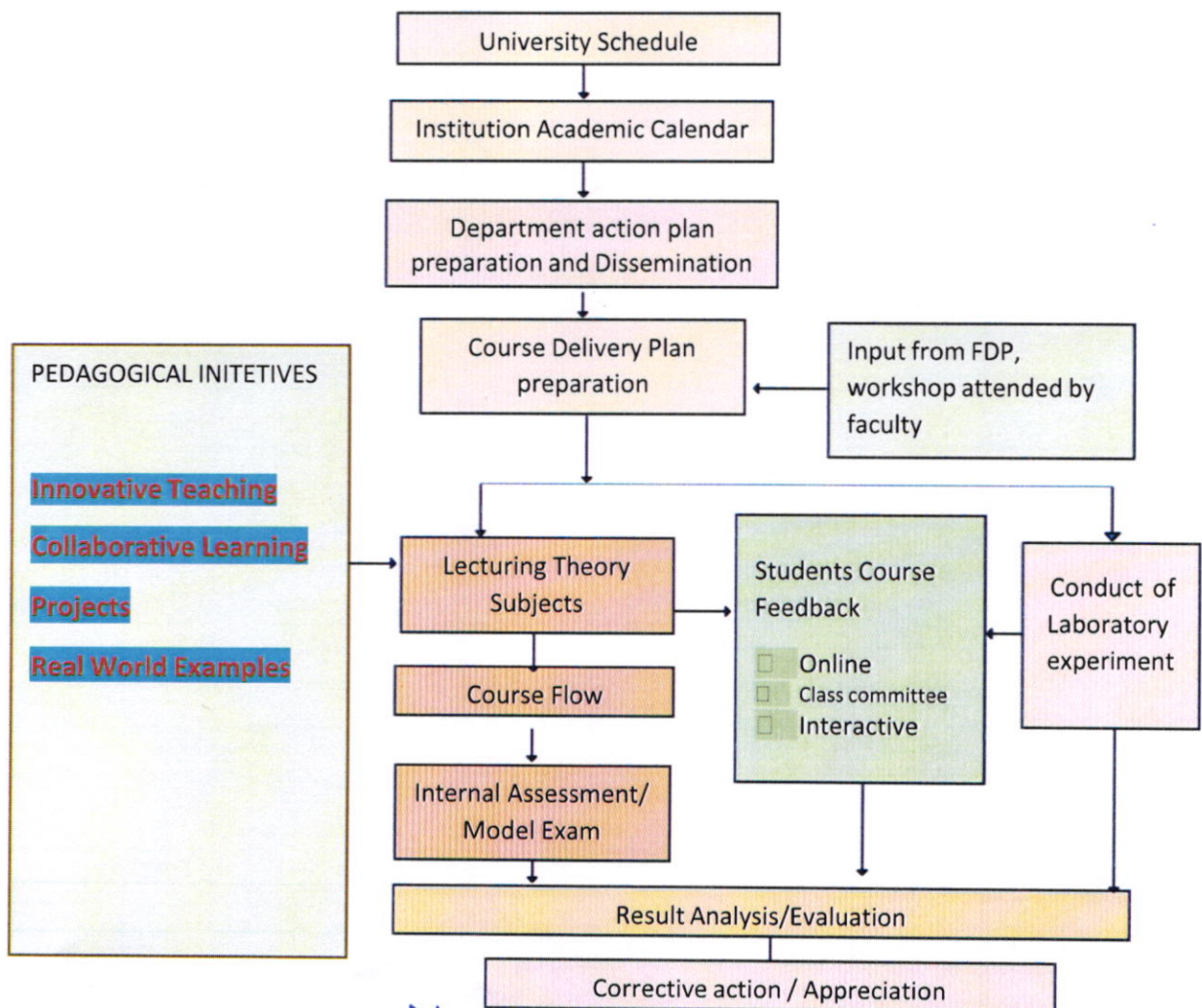
Netaji Subhas institute of Technology (NSIT) is affiliated to Bihar Engineering University (BEU), Patna, Bihar. Hence, Curriculum/Syllabus provided by the academic council of the affiliated university followed in NSIT with the prime goal, to ensure the extent of compliance for attaining the program outcomes and program specific outcomes of each subject. The curriculum designed by the affiliated university with the guidelines of the AICTE which covers various courses in basic science, basic engineering, core and elective courses.



*Director*  
 Netaji Subhas Institute of Technology  
 Amhara, Bihta, Patna, Bihar  
 PIN-801106

## Adhere to Academic Calendar

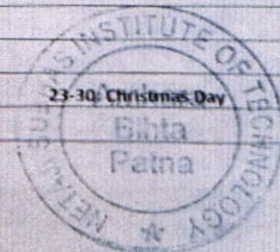
Before the commencement of each semester, the academic calendar of the institution publishes which is in lined with affiliated university and then the calendar is circulated in a particular academic year. A proper teaching –learning method is carrying out by circulating the calendar to the academic council of the college and to all the stakeholders. The academic calendar is prepared by the Dean academics in discussions with all HODs. In the starting of the academic session, the students are described about the academic calendar and the same is uploaded on the website of the institute and displayed on department notice boards. Internal examination schedule is available in the academic calendar. The academic calendar help teaching staffs to plan their individual course delivery and commence academic and other actions. Head of all departments monitor completion of the syllabus of each subject based on the lesson plan prepared by teachers. The academic calendar consists both academic and non-academic activities and is strictly adhered as per the schedules given below.



*Director*  
 Netaji Subhas Institute of Technology  
 Amhara, Bihta, Patna, Bihar  
 PIN-801106

The academic and non-activities mentioned in the academic calendar are strictly adhered as per the schedules.

NETAJI SUBHAS INSTITUTE OF TECHNOLOGY, BIHTA, PATNA								
Academic Calendar Session (2023-24)								
Month	Day						No. Of Instructional days	Activities
	Mon	Tue	Wed	Thu	Fri	Sat		
July, 2023						1	0	
	3	4	5	6	7	8	0	
	10	11	12	13	14	15	0	
	17	18	19	20	21	22	0	24: Commencement of Classes of 4th & 6th Sem.
	24	25	26	27	28	29	5	29: Muharram
	31						1	
Aug, 2023		1	2	3	4	5	5	
	7	8	9	10	11	12	6	
	14	15	16	17	18	19	4	15: Independence day
	21	22	23	24	25	26	6	15: Orientation Day for First year students session (2023-2027), 21-26: Induction program & Bridge Course
	28	29	30	31			3	30: RAKSHABANDHAN
Sep, 2023					1	2	2	01: Commencement of Class for first year
	4	5	6	7	8	9	5	06: Sri Krishna Janmastami
	11	12	13	14	15	16	6	
	18	19	20	21	22	23	3	21-23: Mid Term Examination of 4th & 6th Sem. (Depending on university exam Schedule)
	25	26	27	28	29	30	6	28: Result of Mid Term Exam
Oct, 2023	2	3	4	5	6	7	5	2: Gandhi Jayanti
	9	10	11	12	13	14	6	
	16	17	18	19	20	21	3	19-25: Durga Puja
	23	24	25	26	27	28	3	
	30	31					2	
Nov, 2023			1	2	3	4	4	
	6	7	8	9	10	11	4	10-21 : Diwali & Chhath Puja
	13	14	15	16	17	18	0	
	20	21	22	23	24	25	4	
	27	28	29	30			4	
Dec, 2023					1	2	2	
	4	5	6	7	8	9	6	
	11	12	13	14	15	16	6	
	18	19	20	21	22	23	5	23-30: Christmas Day
	25	26	27	28	29	30	0	



*Director*  
 Netaji Subhas Institute of Technology  
 Amhara, Bihta, Patna, Bihar  
 PIN-801106

Jan, 2024	1	2	3	4	5	6	4	1-2: New Year	
	8	9	10	11	12	13	6		
	15	16	17	18	19	20	6		15: Makar Sankranti
	22	23	24	25	26	27	5		26: Republic Day
	29	30	31				3		
Feb, 2024				1	2	3	2	5-7: Mid Term Examination of First Sem. (Depending on university exam Schedule) 14: Saraswati Puja, 16-17: Result of Mid Term Exam	
	5	6	7	8			6		
	12	13	14	15	16	17	6		
	19	20	21	22	23	24	0		
	26	27	28	29			0		

1	Seminar/Guest Lectures/Training Program to be conducted as per time table or last week of the month or on Saturday.
2	Two class test and Minimum three assignment are mandatory.
3	The date of class test as per department notice.
2	Improvement test for Class Test-1, Class test-2 & Midterm Exam to be Conducted at department level.
3	Make -up Classes/Remedial Classes to be conducted on Every Saturday or as per requirement at department level.
4	Academic Review twice in a Semester (After 20 days of class start & at the end of Semester)
5	Placement Enhancement activity is to be conducted as per requirement.
6	Result of Class Test to be display at department level
7	All HOD'S Meeting with Dean Academics at every last week of the month or on Saturday.
8	University Theory & Practical Exams as per University Schedule.
9	Semester break as per University Schedule.
10	Minor variations are permissible as per the requirement.

Session: 1st SEM: 2023-2027, 4th SEM: 2021-25, 6th SEM: 2020-24

Copy to:-

- Office of Director
- Registrar office
- Dean (Adm), for necessary action
- Dean (Acad), for necessary action
- All HOD'S, for necessary action
- All Cell in charges for necessary action

*J. Dalu*  
 Dean Academic  
 Dean (Academics)  
 Netaji Subhas Institute of Technology  
 Amhara, Bihta, Patna.

*R. K. Singh*  
 Dean Administration  
 Dean  
 NSIT, Bihta, Patna  
 Netaji Subhas Institute of Technology  
 Amhara, Bihta, Patna

Figure: 1 Sample of Academic Scheme

*R. K. Singh*  
 Director  
 Netaji Subhas Institute of Technology  
 Amhara, Bihta, Patna, Bihar  
 PIN-801106

Academic calendar provides the following information.

- Academic semester commencement and closing dates.
- Details of the internal examination (Affiliated University provides in advance the details of the final university examination)
- Tentative dates of the result publication of the internal examination are also mentioned.
- The dates of the project appraisal are mentioned.
- Dates of various activities are also specified.
- Dates of working days and holidays.
- Figure 1 is one sample of the academic calendar.

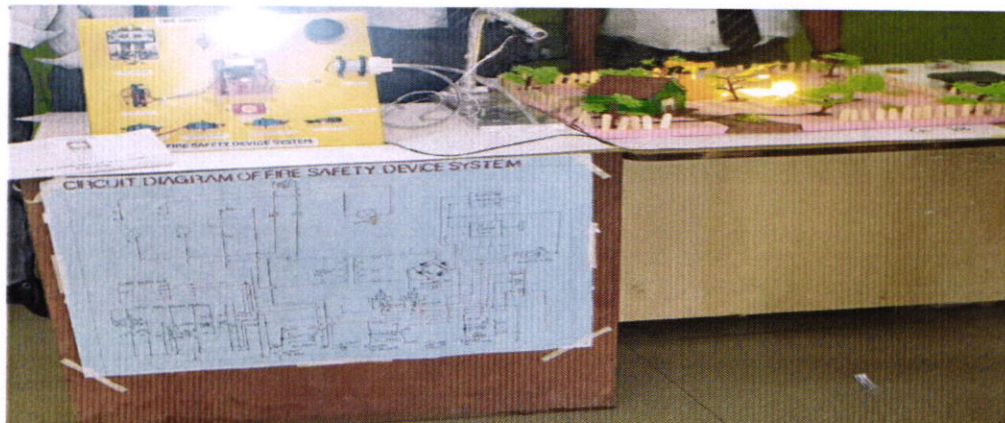
### **Instructional Methods and Scholarly Initiatives:**

Quality of teaching and learning can be obtainable with excellent instructional techniques and educational initiatives. In the teaching process, the course instructional technique and its assessment can be used and described as follows:

1. Course outcomes were developed using Bloom's technique and mapping appropriately with Program Outcome (PO)/Program Specific Outcome (PSO).
2. Course-delivered plan preparation.
3. Preparation of questions for internal assessment test using Bloom's level.

Delivering the prepared course plans using the instructional methods described as follows: -

1. Direct teaching: It is the explicit teaching of a skill set to the students using lectures or demonstration of the material.
2. Indirect teaching: Delivering content through interactive instruction empirical learning comprises facilitation, individualization, and conducting various group management.

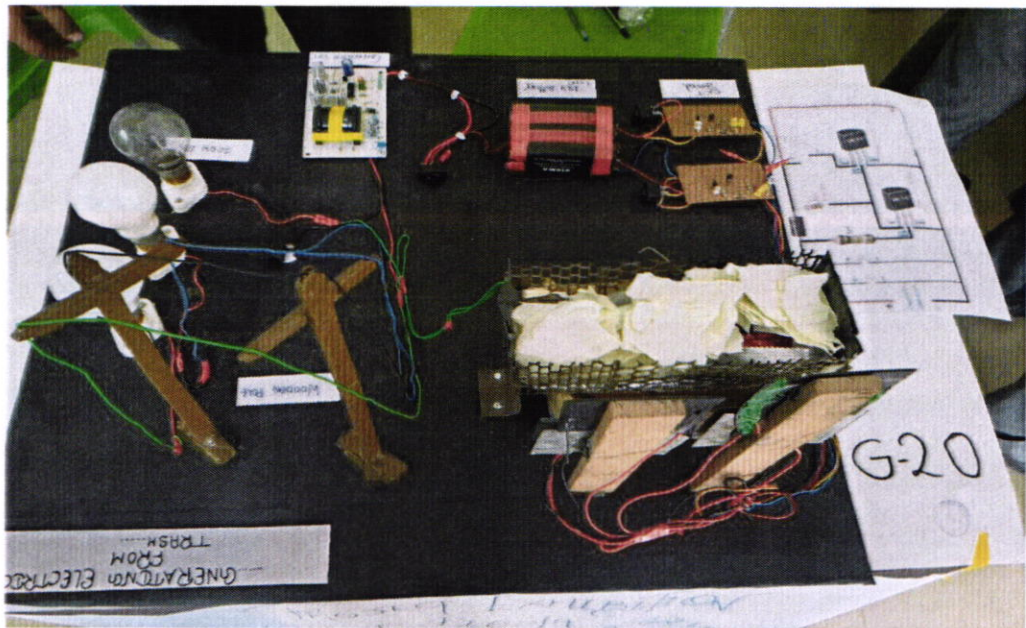


**Project-based learning**

**Direct**  
Netaji Subhas Institute of Technology  
Amhara, Bihta, Patna, Bihar  
PIN-801106



Project-based learning



Project-based learning



Site Visit of UltraTech Cement

*Director*  
Netaji Subhas Institute of Technology  
Amhara, Bihta, Patna, Bihar.  
PIN-801106



Contour Survey



Site Visit of UltraTech Cement



Visit of Footwear Design and Development

*[Signature]*  
**Director**  
Netaji Subhas Institute of Technology  
Amhara, Bihta, Patna, Bihar  
PIN-801106





Survey Camp



Visit of Incubation Centre



Internship

### **Conduction of laboratory experiments:**

Laboratory experiments are scheduled and conducted based on the syllabus provided by the affiliated university. In the first class of the laboratory, safety rules of the laboratory, details of basic equipment available and their specifications are explained to students for smooth conduction and understand the concept. Laboratory manuals prepared by the experienced teaching members in advance. Few students are selected based on their laboratory performance and asked to make the model of few lab equipment. Faculty members are stimulated to plan at least one new experiment along with experiments available in the curriculum. Assessment of students can be done with the help of well-defined rubrics.

### **Delivery of course and Evaluation:**

Course delivery effectiveness is monitored by the following mechanism.


1. To reinforce the delivery of course and effective learning, interactive feedback with HOD and Dean Academics along with class committee meeting plays vital role.
2. To collect the student's feedback on course content clarity and delivery centralized online feedback system of the institute is employed.

Internal assessment test is carried out periodically in each semester for each course in the program. Students are categorized as Bright, Mediocre and Weak by the mentor base on academic performance derived from the result analysis. Students Classification:

- Students get 50% and below score in three or more subjects then come under Academically Weak Students.
- Students having >50% and < 60% in all the subjects then comes under Mediocre Students.
- Students having >60% in all the subjects then comes under Bright Students. Students are provided with essential academic provision through counselling which assistance them achieve better in future.

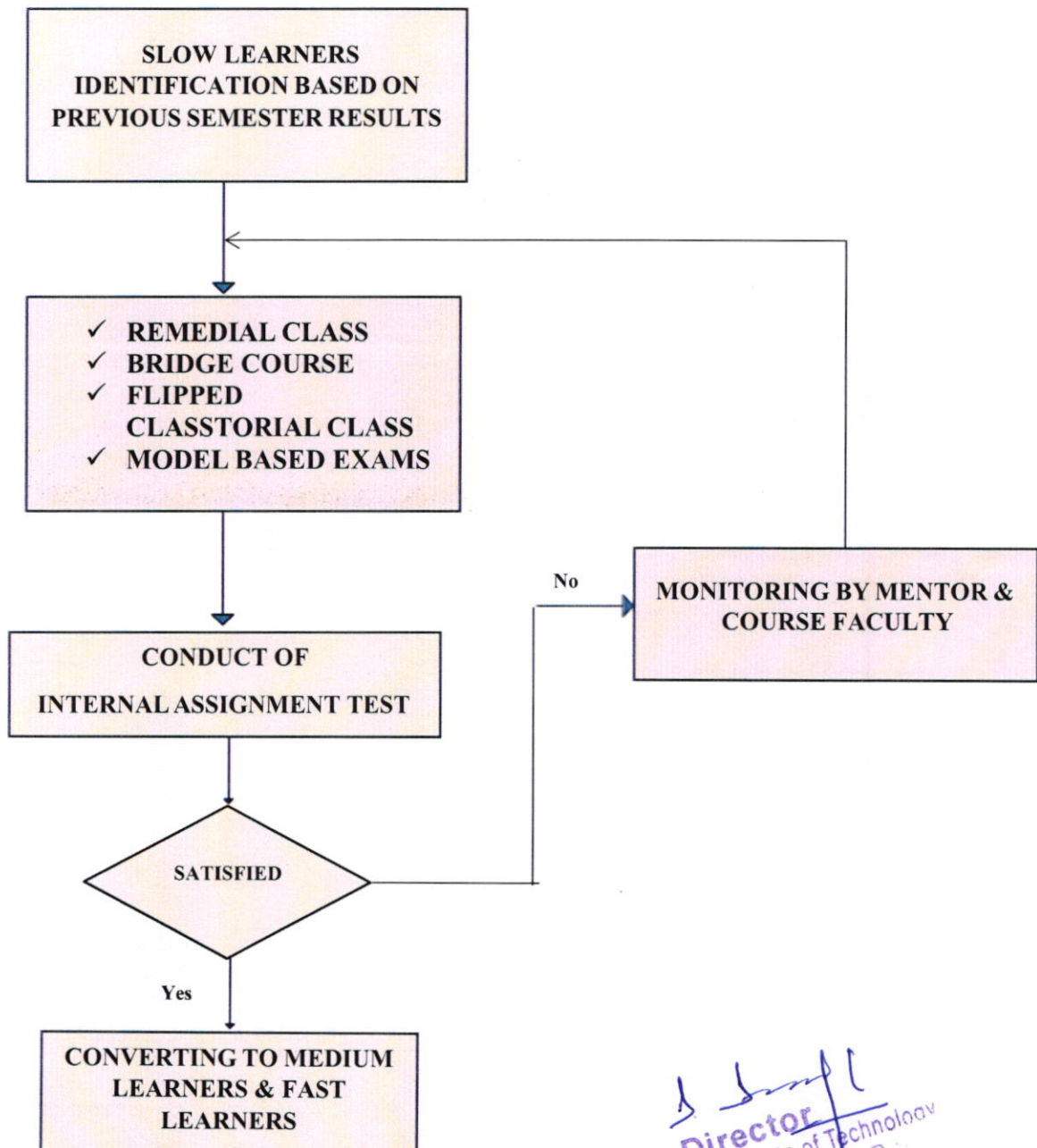
### **Assisting Weak Students:**

To enhance score and academic and non-academic sets of the slow students the concerned faculties are assigned to motivate and guide. They take responsibility parental approaches parentally to slow learners to sort out their problems, motivate them to progress their academic enactment and also guide to illuminate their doubts about the identified challenging subjects.

  
**Director**  
Netaji Subhas Institute of Technology  
Amhara, Bihta, Patna, Bihar  
PIN-801106

Such students get special treatments which help them to enhance attainment. Activities conducted for the slow learners are given as below.

- Remedial classes
- To enhance internal marks conducting of re-tests.
- Additional practical sessions
- Assignments and Question banks
- Solved university question papers
- Tutorials



*[Signature]*  
**Director**  
Netaji Subhas Institute of Technology  
Amhara, Bihta, Patna, B:  
PIN-801106

The follow up of the aforesaid actions to the weak learners effect in gradual developments in academics.

**Reinforcements for Bright Students:**

Our institution also identifies Creamy layer students on the basis of their academic consistent performance in the higher secondary and semester examinations. Provisions available for the bright students are as follows.

- Encouragements towards the preparations of advanced entrance examination like GATE, GRE etc.
- Creating opportunity to provide internship with the collaboration of the professors at IITs and NITs.
- Motivate students to publish papers in conferences (national and international).

**Feedback system on teaching learning process and actions performed:**

All the students fill the feedback form at the end of every semester to evaluate the course delivery of the faculty. After reviewing of the feedback report by HOD and dean academics essential corrective measures will be commenced if feedback collected is less than 75 % and concerned faculty members are advised to attend Workshop, seminar and FDP to improve the effectiveness of the teaching.

**Feedback system outcome and measures taken:**

- Delivering course lectures efficiently with targeted learning.
- Using Innovative Instructional Strategies
- Students comprehend theory better and practice more thoroughly
- Starts the process of improving faculty knowledge through FDP and industrial training.
- Making efficient use of resources for extended learning after contact hours.

  
**Director**  
Netaji Subhas Institute of Technology  
Amhara, Bihta, Patna, Bihar  
PIN-801106